



Project References

Solarlux SL 60 | Projects in the USA and Europe



Solarlux SL 60 | Projects in the USA and Europe



USA



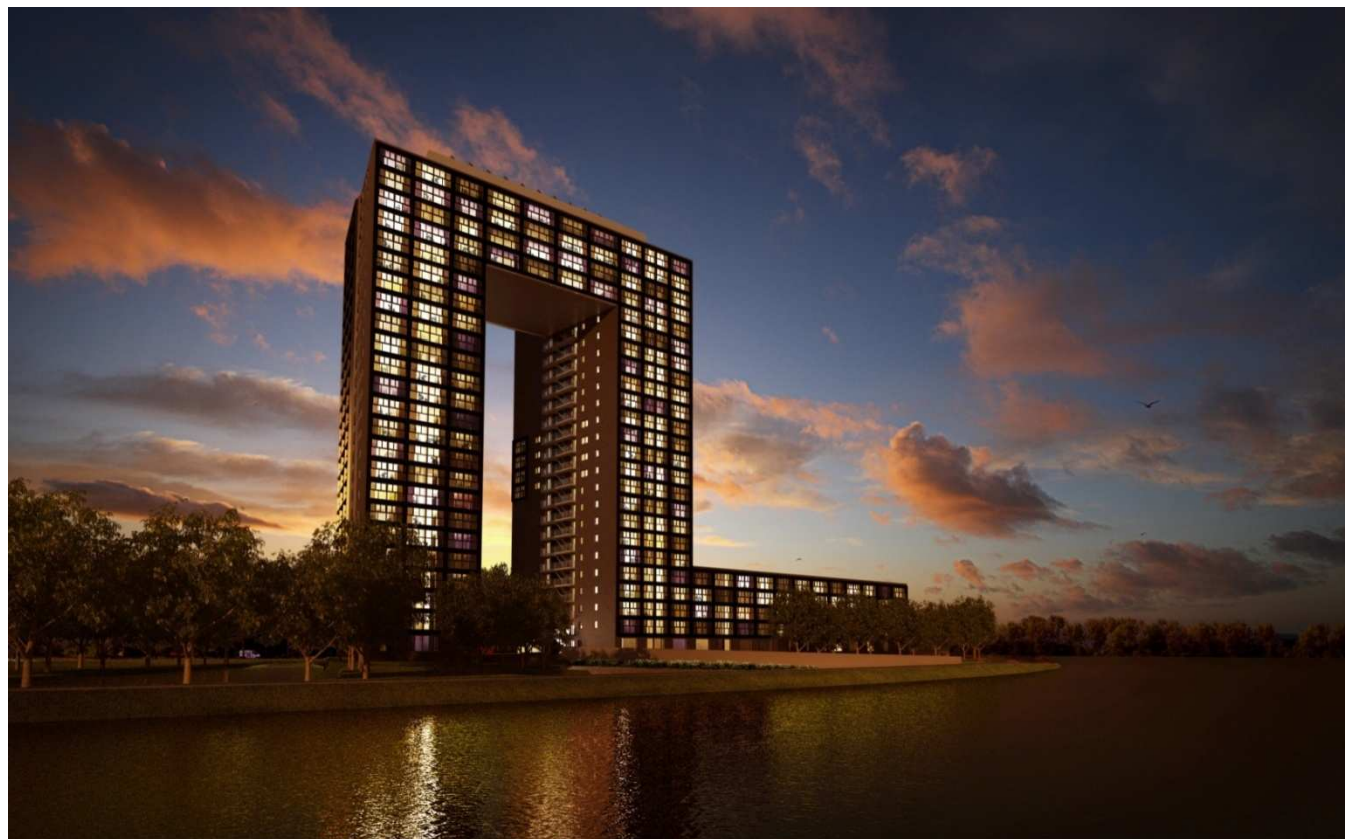
Solarlux SL 60 | Projects in the USA and Europe



Netherlands



Nether- lands



- Solarlux in Asia - Projects

SD Towers

- ✓ 2 towers
- ✓ height: 210 m
- ✓ floors: 60
- ✓ sets of folding doors: 250
- ✓ panel size: 2750 x 800
- ✓ wind load: 2.7 kPa (lower floors)
- ✓ wind load: 3.8 kPa (upper floors)
- ✓ water resistance: 600 Pa



The Cliveden

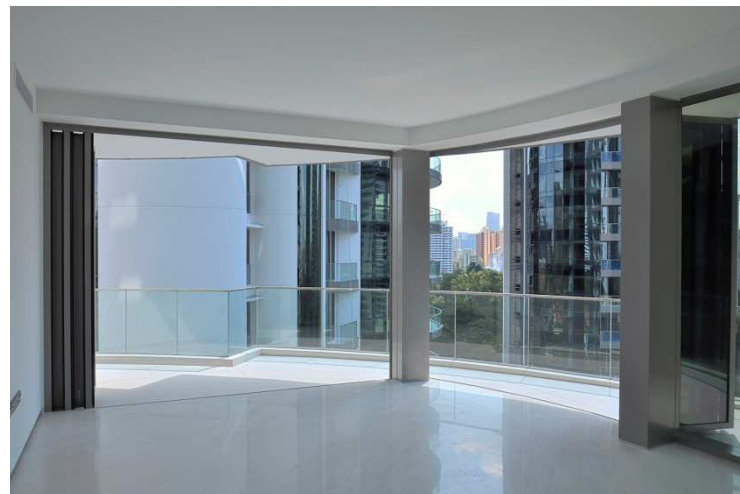
- ✓ 4 towers
- ✓ height: 120 m
- ✓ floors: 27
- ✓ sets of folding doors: 200
- ✓ panel size: 2900 x 900 mm
- ✓ wind loads: 2.2 kPa
- ✓ water resistance: 600 Pa



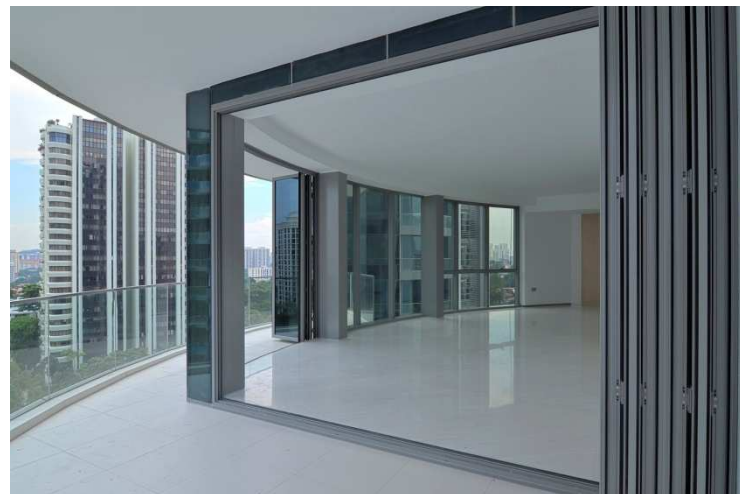
Solarlux SL 70 | Singapore – The Cliveden



Solarlux SL 70 | Singapore – The Cliveden



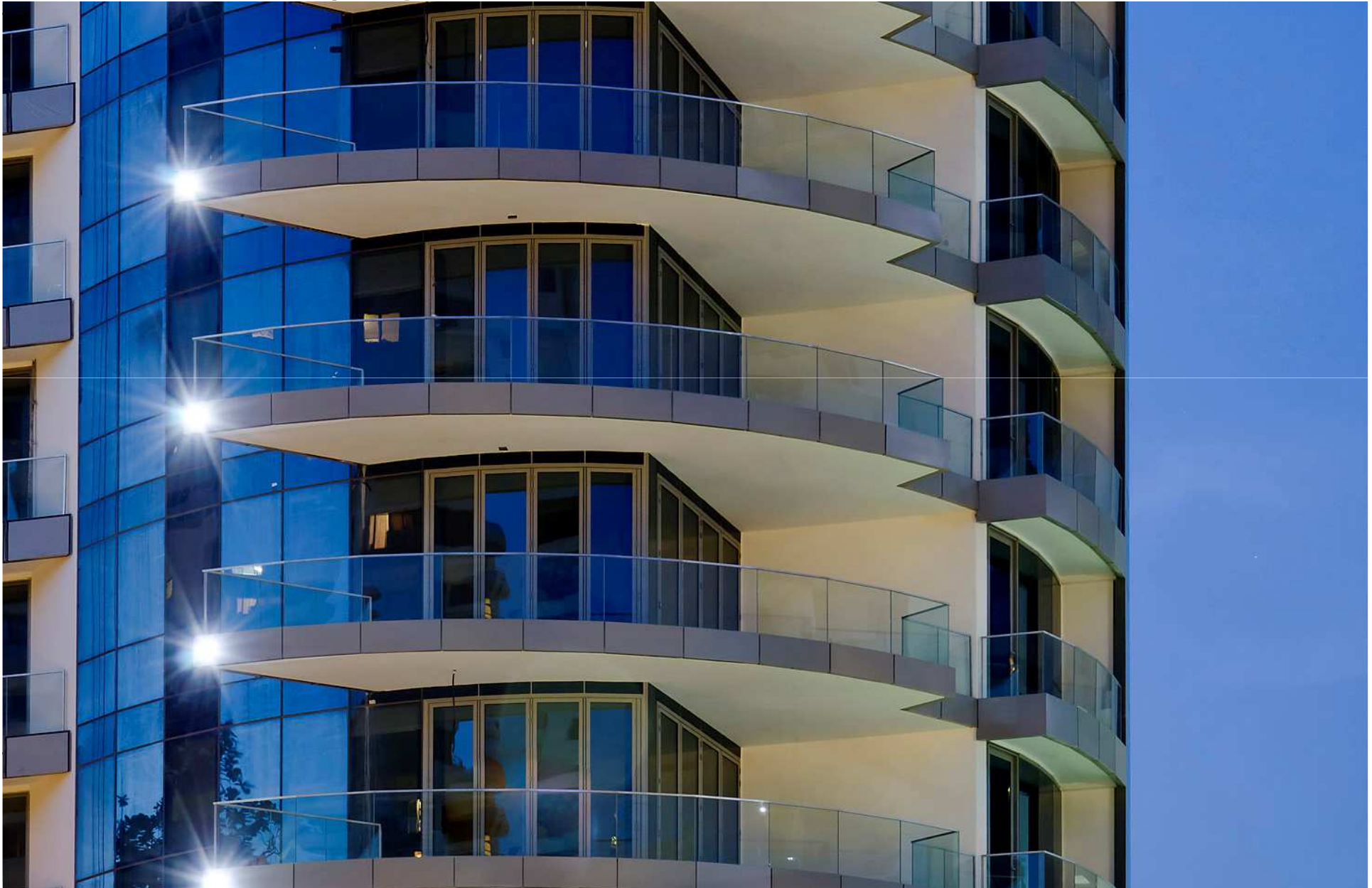
Solarlux SL 70 | Singapore – The Cliveden



Solarlux SL 70 | Singapore – The Cliveden



Solarlux SL 70 | Singapore – The Cliveden



Reflections

- ✓ 6 towers
- ✓ height: 160 m
- ✓ floors: 42
- ✓ sets: 180
- ✓ panel: 2700x800 mm
- ✓ wind load: 2.45 kPa
- ✓ water res.: 600 Pa
- ✓ Architect:
Daniel Libeskind



Solarlux SL 60 | Singapore – Reflections

